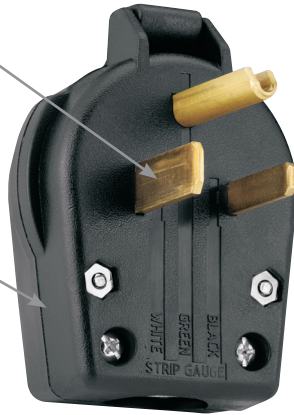


Commercial straight blade power devices features & benefits

Universal plugs include blades for both 30A and 50A configurations of the same voltage

Terminals have pressure plates to protect wires



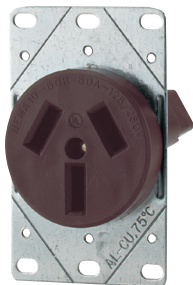
Plug



Surface receptacle

Exclusive lay-in terminals accept up to #4 AWG wire

Back features concentric knockouts and an adjustable cord clamp to allow wiring from back or bottom



Flush receptacles feature heavy gauge galvanized steel mounting strap and thermoplastic body



Broad selection of wallplates available for flush receptacle mounting



Surface receptacles can be wired for back or bottom wiring



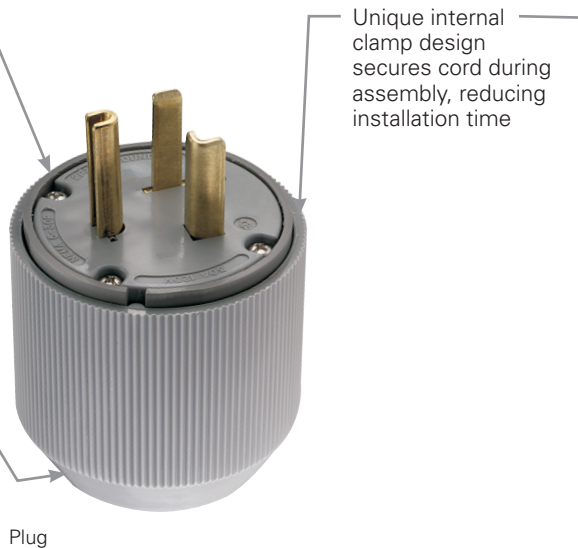
Variety of 30A, 50A and 60A configurations available

Compliances, specifications and availability are subject to change without notice.

Industrial straight blade power devices features & benefits

Rugged high-strength thermoplastic construction

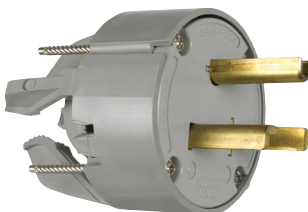
Neoprene gasket seals around cord for added terminal protection from external elements



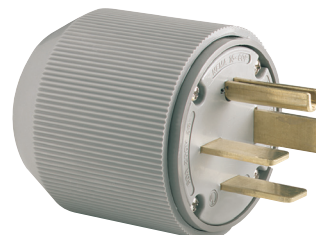
Angled plug versions have 4 possible positions for maximum convenience



Broad selection of flanged inlets accept #12 AWG to #4 AWG conductors



Quick-drive stainless steel assembly screws provide corrosion resistance and speed installation time



Variety of 30A, 50A and 60A configurations available

Compliances, specifications and availability are subject to change without notice.

Eaton.com
Eaton.com/wiringdevices



CHS Controls AB
Tel +46 42 38 61 00, Fax +46 42 38 61 29
chs@chscontrols.se www.chscontrols.se

EATON Wiring Devices Buyers Guide

Straight blade power devices 20, 30, 50 & 60A



Rating: Amps V/AC	Receptacle/ plug NEMA configuration	Flush receptacle	Wallplate	Surface receptacle	Panel mount receptacle	Plugs	Angle plugs	Connectors	Flanged inlets	Adapters
-------------------------	---	---------------------	-----------	-----------------------	---------------------------	-------	-------------	------------	-------------------	----------

2-pole, 3-wire grounding

30A 125V Page A-71	 5-30R	 5-30P	Commercial: 1233 (Brown)	Standard size: 39CH, 68*, 2068, 2168*, 93221, 93227* Mid-size: 5068, PJ703*, PJ724		Industrial: 5717N (Gray)	Commercial: S41 (Black) Industrial: 5717AN (Gray)	Industrial: 6716N (Gray & Black)	Industrial: 5717NFI (Gray)	
			Industrial: 5716N (Black)							
30A 125V Page A-70	 TT-30R	 TT-30P	Commercial: 1263 (Black)		Commercial: U1263 (Black)		Commercial: 83 (Black)			Commercial: 1264 (Receptacle to NEMA 5-15/5-20 Plug) (Black)
30A 250V Page A-72	 6-30R	 6-30P	Commercial: 1234 (Black) Industrial: 5700N (Black)		Commercial: 1232 (Black)	Industrial: 5701N (Gray)	Commercial: S42 (Black) Industrial: 5701AN (Gray)	Industrial: 6700N (Gray & Black)	Industrial: 5701NFI (Gray)	
30A 277V Page A-73	 7-30R	 7-30P	Industrial: 5795N (Black)			Industrial: 5703N (Gray)	Industrial: 5703AN (Gray)	Industrial: 6795N (Gray & Black)	Industrial: 5703NFI (Gray)	
50A 125V Page A-74	 5-50R	 5-50P	Commercial: 1253 (Black)		Commercial: 1251 (Black)	Industrial: 5712N (Gray)	Commercial: S41 (Black) Industrial: 5712AN (Gray)	Industrial: 6711N (Gray & Black)	Industrial: 5712NFI (Gray)	
50A 250V Page A-75	 6-50R	 6-50P	Commercial: 1254 (Black) Industrial: 5709N (Black)		Commercial: 1252 (Black)	Industrial: 5710N (Gray)	Commercial: S42 (Black) Industrial: 5710AN (Gray)	Industrial: 6709N (Gray & Black)	Industrial: 5710NFI (Gray)	
50A 277V Page A-76	 7-50R	 7-50P				Industrial: 5705N (Gray)	Industrial: 5705AN (Gray)	Industrial: 6796N (Gray & Black)	Industrial: 5705NFI (Gray)	

3-pole, 3-wire non-grounding

20A 125/250V Page A-77	 10-20R	 10-20P	Commercial: 805 (Ivory)			Industrial: 9151N (Gray) Commercial: 2836 (Armored PVC) (Yellow)				
30A 125/250V Dryer Page A-66	 10-30R	 10-30P	Commercial: 38B (Brown)	Standard size: 39CH, 68*, 2068, 2168*, 93221, 93227*	Commercial: 125 (Black)	Industrial: 9337N (Gray)	Commercial: S80 (Black) Industrial: 9352AN (Gray)	Industrial: 9341N (Gray & Black)	Industrial: 9337NFI (Gray)	
50A 125/250V Range Page A-67	 10-50R	 10-50P	Commercial: 32B (Brown) Industrial: 7985N (Black)	Mid-size: 5068, PJ703*, PJ724 Standard size: 192*	Commercial: 112 (Black)	Industrial: 4524N (Gray)	Commercial: S80 (Black) Industrial: 7952AN (Gray)	Industrial: 4526N (Gray & Black)	Industrial: 4524NFI (Gray)	

*2-gang wallplates. 2-gang wallplates and boxes are recommended for power flush mount receptacles

Power device dimensional information: A-90; Specification information: A-105, A-106, A-107

Compliances, specifications and availability are subject to change without notice.

Straight blade power devices 20, 30, 50 & 60A

A
SECTION



Rating: Amps V/AC	Receptacle/ plug NEMA configuration	Flush receptacles	Wallplate	Surface receptacle	Panel mount receptacle	Plugs	Angle plugs
-------------------------	---	----------------------	-----------	-----------------------	---------------------------	-------	-------------

3-pole, 4-wire grounding

20A 125/250V Page A-78	 14-20R 14-20P	Industrial: 5759 (Black)					
30A 125/250V Dryer Page A-68	 14-30R 14-30P	Commercial: 1257BK (Black) 1257W (White) Industrial: 5744N (Black)	Standard size: 39CH, 68*, 2068, 2168*, 93221, 93227* Mid-size: 5068, PJ703*, PJ724	Commercial: 1225 (Black)		Industrial: 5746N (Gray)	Commercial: S21 (Black) Industrial: 5732AN (Gray)
30A 3Ø 250V Page A-79	 15-30R 15-30P	Industrial: 8430N (Black)	Standard size: 69*, 5169*, 93223*			Industrial: 8432N (Gray)	Industrial: 8432AN (Gray)
50A 125/250V Range Page A-69	 14-50R 14-50P	Commercial: 1258 (Black) Industrial: 5754N (Black)	Standard size: 39CH, 68*, 2068, 2168*, 93221, 93227* Mid-size: 5068, PJ703*, PJ724	Commercial: 1212 (Black)	Commercial: 58 (Black)	Industrial: 5745N (Gray)	Commercial: S21 (Black) Industrial: 5752AN (Gray)
50A 3Ø 250V Page A-80	 15-50R 15-50P	Industrial: 8450N (Black)	Standard size: 69*, 5169*, 93223*		Industrial: 8450P (Black)	Industrial: 8452N (Gray)	Industrial: 8452AN (Gray)
60A 125/250V Page A-81	 14-60R 14-60P	Industrial: 9460N (Black)	Standard size: 69*, 5169*, 93223*		Commercial: 60 (Black)	Industrial: 9462N (Gray)	Commercial: S20 (Black) Industrial: 9462AN (Gray)
60A 3Ø 250V Page A-82	 15-60R 15-60P	Industrial: 8460N (Black)	Standard size: 69*, 5169*, 93223*			Industrial: AH8462N (Gray)	Industrial: AH8462AN (Gray)

4-pole, 4-wire, non-grounding

30A 3ØY 120/208V Page A-83	 18-20P 18-20R					Industrial: 7521N (Gray)	Industrial: 7521N (Gray)
30A 3ØY 120/208V Page A-83	 18-30R 18-30P					Industrial: 8332N (Gray)	Industrial: 8332AN (Gray)
50A 3ØY 120/208V Page A-84	 18-50R 18-50P					Industrial: 8352N (Gray)	Industrial: 8352AN (Gray)
60A 3ØY 120/208V Page A-85	 18-60R 18-60P	Industrial: 5515N (Black)	Standard size: 69*, 5169*, 93223*			Industrial: 5517N (Gray)	Commercial: S19 (Black) Industrial: 4516AN (Gray)

*2-gang wallplates. 2-gang wallplates and boxes are recommended for power flush mount receptacles

Power device dimensional information: A-90; Specification information: A-105, A-106, A-107
Compliances, specifications and availability are subject to change without notice.

Eaton.com
Eaton.com/wiringdevices



CHS Controls AB
Tel +46 42 38 61 00, Fax +46 42 38 61 29
chs@chscontrols.se www.chscontrols.se

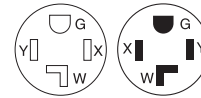
EATON Wiring Devices Buyers Guide

A-65

Range & dryer power devices

Product description

3-pole, 4-wire grounding
30A, 125/250V/AC



14-30R 14-30P

Design features

- For use in homes with 4-wire range and dryer connection points
- Heavy gauge galvanized steel mounting strap for corrosion resistance
- Flush receptacles fit one-gang or two-gang enclosures
- For use with copper or aluminum wire
- Surface receptacles have exclusive lay-in terminals that accept up to #4 AWG wire
- Surface receptacle backs feature concentric knockouts and an adjustable cord clamp to allow wiring from back or bottom



1257



5744N

Flush power receptacles



Rating A	V/AC	NEMA	Description	Color	Catalog no.	
30	125/250	14-30R	Heavy-duty flush mount power receptacle, matching plug S21	BK	□ 1257* [†]	•
			Industrial grade flush mount power receptacle, matching plug 5732AN	W	□ 1257W* [†]	•
				BK	□ 5744N	•

cULus Listed to UL498, file no. E15058; CSA certified to C22.2, no.42, *UL and CSA certified, [†]Not Fed Spec

Surface power receptacles



Rating A	V/AC	NEMA	Description	Color	Catalog no.	
30	125/250	14-30R	Surface mount power receptacle, matching plug S21	BK	□ 1225	•

Listed to UL498, file no. E15058; CSA certified to C22.2, no.42



1225



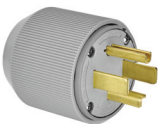
S21

Heavy-duty & industrial grade plugs



Rating A	V/AC	NEMA	Description	Color	Catalog no.	
		14-30P/14-50P	Universal NEMA power plug, matching receptacles 1257, 1258	BK	□ S21*	•
30	125/250	14-30P	Industrial grade auto grip straight body power plug	GY	□ 5746N	•
		14-30P	Industrial grade angled power plug	GY	□ 5732AN [†]	•

Listed to UL498, file no. E15058; CSA certified to C22.2, no.42, *Not Fed Spec, [†]Not NOM



5746N



5732AN

Color ordering information:

Color suffix: BK (Black), GY (Gray), W (White)

BK	GY	W
(Black)	(Gray)	(White)

Dimensional information: A-90 **Specification information:** Please visit www.eaton.com/wiringdevices

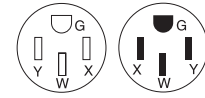
Compliances, specifications and availability are subject to change without notice.

Indicates USMCA compliant - Page Q-41

Range & dryer power devices

Product description

3-pole, 4-wire grounding
50A, 125/250V/AC



14-50R

14-50P

Design features

- For use in homes with 4-wire range and dryer connection points
- Heavy gauge galvanized steel mounting strap for corrosion resistance
- Flush receptacles fit one-gang or two-gang enclosures
- For use with copper or aluminum wire
- Surface receptacles have exclusive lay-in terminals that accept up to #4 AWG wire
- Surface receptacle backs feature concentric knockouts and an adjustable cord clamp to allow wiring from back or bottom



1258



1212



58



S21



5745N

Flush power receptacles

cULus FULS NOM 426

Rating A	V/AC	NEMA	Description	Color	Catalog no.	
50	125/250	14-50R	Heavy-duty flush mount power receptacle, matching plug S21	BK	□ 1258*	•
			Industrial grade flush mount power receptacle, matching plug 5752AN	BK	□ 5754N	•

cULus Listed to UL498, file no. E15058; CSA certified to C22.2, no.42, *UL and CSA certified

Surface power receptacles

UL NOM 426 SP

Rating A	V/AC	NEMA	Description	Color	Catalog no.	
50	125/250	14-50R	Surface mount power receptacle	BK	□ 1212	•

Listed to UL498, file no. E15058; CSA certified to C22.2, no.42

Panel power receptacles

UL NOM 426 SP

Rating A	V/AC	NEMA	Description	Color	Catalog no.	
50	125/250	14-50R	Panel mount power receptacle	BK	□ 58	•

Listed to UL498, file no. E15058; CSA certified to C22.2, no.42

Heavy-duty & industrial grade plugs

cULus FULS NOM 426

Rating A	V/AC	NEMA	Description	Color	Catalog no.	
		14-30P/14-50P	Universal NEMA power plug, matching receptacles 1257, 1258	BK	□ S21*	•
50	125/250	14-50P	Industrial grade auto grip straight body power plug	GY	□ 5745N [†]	•
		14-50P	Industrial grade angled power plug	GY	□ 5752AN [†]	•

Listed to UL498, file no. E15058; CSA certified to C22.2, no.42, *Not Fed Spec, [†]Not NOM

Color ordering information:

Color suffix: BK (Black), GY (Gray)

BK	GY
(Black)	(Gray)

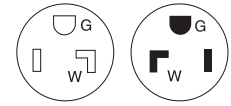
Dimensional information: A-90 **Specification information:** Please visit www.eaton.com/wiringdevices
Compliances, specifications and availability are subject to change without notice.

Indicates USMCA compliant - Page Q-41

Heavy-duty grade power plugs & adapters

Product description

2-pole, 3-wire grounding
30A, 125V/AC



5-30R

5-30P

Design features

- For use with welding equipment
- Heavy gauge galvanized steel mounting strap for corrosion resistance
- Flush receptacles fit one-gang or two-gang enclosures
- For use with copper or aluminum wire
- Surface receptacles have exclusive lay-in terminals that accept up to #4 AWG wire
- Surface receptacle backs feature concentric knockouts and an adjustable cord clamp to allow wiring from back or bottom



1233



S41



6716N



5717NFI

Flush power receptacles



Rating A	V/AC	NEMA	Description	Color suffix	Catalog no.	
30	125	5-30R	Heavy-duty flush mount power receptacle, matching plug S41	BK	□ 1233 [†]	•
			Industrial grade flush power receptacle, matching plug 5717AN	BK	□ 5716N*	•

*cULus Listed to UL498, file no. E15058, [†]Not Fed Spec certified

Heavy-duty & industrial grade plugs



Rating A	V/AC	NEMA	Description	Color suffix	Catalog no.	
30	125	5-30P/5-50P	Universal NEMA power plug, matching receptacles 1233, 1253	BK	□ S41* [†]	•
		5-30P	Industrial grade auto grip straight body power plug	GY	□ 5717N	•
			Industrial grade angled power plug	BK	□ 5717AN	•

*UL and CSA certified, [†]Not Fed Spec certified

Industrial grade connectors



Rating A	V/AC	NEMA	Description	Color	Catalog no.	
30	125	5-30R	Industrial grade auto grip power connector	GY, BK	□ 6716N	

cULus Listed to UL498, file no E15058; CSA certified to C.22.2 No. 42

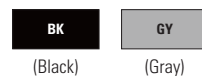
Industrial grade flanged inlets



Rating A	V/AC	NEMA	Description	Color	Catalog no.	
30	125	5-30P	Nylon construction, back wire	GY	□ 5717NFI	•

Color information:

Color suffix: BK (Black), GY (Gray)



Dimensional information: A-90 **Specification information:** Please visit www.eaton.com/wiringdevices
Compliances, specifications and availability are subject to change without notice.

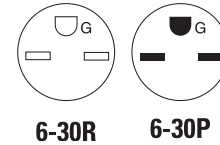


Indicates USMCA compliant - Page Q-41

Heavy-duty grade power devices

Product description

2-pole, 3-wire grounding
30A, 250V/AC



1234



1232



S42

Design features

- For use with welding equipment
- Heavy gauge galvanized steel mounting strap for corrosion resistance
- Flush receptacles fit one-gang or two-gang enclosures
- For use with copper or aluminum wire
- Surface receptacles have exclusive lay-in terminals that accept up to #4 AWG wire
- Surface receptacle backs feature concentric knockouts and an adjustable cord clamp to allow wiring from back or bottom

Flush power receptacles

Rating A	V/AC	NEMA	Description	Color suffix	Catalog no.	
30	250	6-30R	Heavy-duty flush mount power receptacle, matching plug S42	BK	□ 1234	•


Listed to UL498, file no. E15058; CSA certified to C22.2, no. 42

Surface power receptacles

Rating A	V/AC	NEMA	Description	Color suffix	Catalog no.	
30	250	6-30R	Surface mount power receptacle, matching plug S42	BK	□ 1232	•

Listed to UL498, file no. E15058; CSA certified to C22.2, no. 42

Heavy-duty & Industrial grade plugs

Rating A	V/AC	NEMA	Description	Color suffix	Catalog no.	
30	250	6-30P/6-50P	Universal NEMA power plug, matching receptacles 1234, 1254	BK	□ S42*	•
		6-30P	Industrial grade auto grip straight body power plug	GY	□ 5701N	•
			Industrial grade angled power plug	BK	□ 5701AN	•

Listed to UL498, file no. E15058; CSA certified to C22.2, no. 42; *Not Fed Spec certified

Industrial grade connectors

Rating A	V/AC	NEMA	Description	Color	Catalog no.
30	250	6-30R	Industrial Grade Auto grip power connector	GY, BK	□ 6700N

Listed to UL498, file no. E15058; CSA certified to C22.2, no. 42

Industrial grade flanged inlets

Rating A	V/AC	NEMA	Description	Color	Catalog no.	
30	250	6-30P	Nylon construction, back wire	GY	□ 5701NFI	•

Listed to UL498, file no. E15058; CSA certified to C22.2, no. 42; NOM certified

Color information:

Color suffix: BK (Black), GY (Gray)



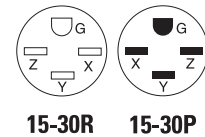
Dimensional information: A-90 **Specification information:** Please visit www.eaton.com/wiringdevices
Compliances, specifications and availability are subject to change without notice.

 Indicates USMCA compliant - Page Q-41

Heavy-duty grade power devices

Product description

3-pole, 4-wire grounding
30A, 3Ø 250V/AC

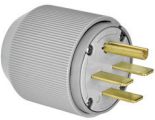


Design features

- Heavy gauge galvanized steel mounting strap for corrosion resistance
- Flush receptacles fit one-gang or two-gang enclosures
- For use with copper wire



8430N



8432N



8432AN

Flush power receptacles

cULus F(UL)S NOM 426

Rating		NEMA	Description	Color	Catalog no.	
A	V/AC					
30	3Ø 250	15-30R	Industrial grade flush mount power receptacle, matching plug 8432AN	BK	□ 8430N	•

cULus Listed to UL498, file no. E15058; CSA certified to C22.2, no.42

Industrial grade plugs

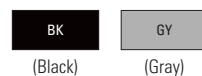
cULus F(UL)S NOM 426

Rating		NEMA	Description	Color	Catalog no.	
A	V/AC					
30	3Ø 250	15-30P	Industrial grade auto grip straight body power plug	GY	□ 8432N	•
			Industrial grade angled power plug	GY	□ 8432AN	•

cULus Listed to UL498, file no. E15058; CSA certified to C22.2, no.42

Color information:

Color suffix: BK (Black), GY (Gray)



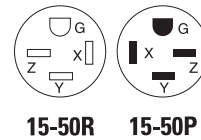
Dimensional information: A-90 **Specification information:** Please visit www.eaton.com/wiringdevices
Compliances, specifications and availability are subject to change without notice.

Indicates USMCA compliant - Page Q-41

Heavy-duty grade power devices

Product description

3-pole, 4-wire grounding
50A, 3Ø 250V/AC



15-50R

15-50P

Design features

- Heavy gauge galvanized steel mounting strap for corrosion resistance
- Flush receptacles fit one-gang or two-gang enclosures
- For use with copper wire
- Plugs made of rugged high-strength thermoplastic construction
- Angled plug has 4 possible positions for maximum convenience



8450N



8450P



8452N



8452AN

Flush power receptacles



Rating		NEMA	Description	Color	Catalog no.	
A	V/AC					
50	3Ø 250	15-50R	Industrial grade flush mount power receptacle, matching plug 8452AN	BK	□ 8450N	•

cULus Listed to UL498, file no. E15058; CSA certified to C22.2, no.42

Panel power receptacles



Rating		NEMA	Description	Color	Catalog no.	
A	V/AC					
50	3Ø 250	15-50R	Panel mount power receptacle	BK	□ 8450P	•

cULus Listed to UL498, file no. E15058; CSA certified to C22.2, no.42

Industrial grade plugs



Rating		NEMA	Description	Color	Catalog no.	
A	V/AC					
50	3Ø 250	15-50P	Industrial grade auto grip straight body power plug	GY	□ 8452N	•
			Industrial grade angled power plug	GY	□ 8452AN	•

Listed to UL498, file no. E15058; CSA certified to C22.2, no.42

Color information:

Color suffix: BK (Black), GY (Gray)

BK	GY
(Black)	(Gray)

Dimensional information: A-90 **Specification information:** Please visit www.eaton.com/wiringdevices

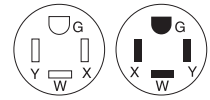
Compliances, specifications and availability are subject to change without notice.

Indicates USMCA compliant - Page Q-41

Heavy-duty grade power devices

Product description

3-pole, 4-wire grounding
60A, 125/250V/AC



14-60R

14-60P

Design features

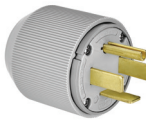
- Heavy gauge galvanized steel mounting strap for corrosion resistance
- Flush receptacles fit one-gang or two-gang enclosures
- For use with copper wire
- Plugs made of rugged high-strength thermoplastic construction
- Angled plug has 4 possible positions for maximum convenience



9460N



S20



9462N



9462AN

Flush power receptacles

Rating A	V/AC	NEMA	Description	Color	Catalog no.	
60	125/250	14-60R	Flush mount power receptacle, side wire	BK	□ 9460N	•


Listed to UL498, file no. E15058; CSA certified to C22.2, no.42

Panel power receptacles

Rating A	V/AC	NEMA	Description	Color	Catalog no.	
60	125/250	14-60R	Panel mount power receptacle	BK	□ 60	•

Listed to UL498, file no. E15058; CSA certified to C22.2, no.42

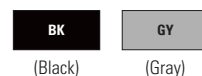
Industrial grade plugs

Rating A	V/AC	NEMA	Description	Color	Catalog no.	
			Heavy-duty angled power plug	BK	□ S20*	•
60	125/250	14-60P	Industrial grade auto grip straight body power plug	GY	□ 9462N ¹	•
			Industrial grade angled power plug	GY	□ 9462AN ¹	•

cULus Listed to UL498, file no. E15058; CSA certified to C22.2, no.42, *Not Fed Spec, ¹Not NOM

Color information:

Color suffix: BK (Black), GY (Gray)



Dimensional information: A-90 **Specification information:** Please visit www.eaton.com/wiringdevices
Compliances, specifications and availability are subject to change without notice.

 Indicates USMCA compliant - Page Q-41

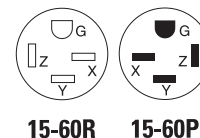
Heavy-duty grade power devices

Product description

3-pole, 4-wire grounding
60A, 3Ø 250V/AC

Design features

- Heavy gauge galvanized steel mounting strap for corrosion resistance
- Flush receptacles fit one-gang or two-gang enclosures
- For use with copper wire
- Plugs made of rugged high-strength thermoplastic construction
- Angled plug has 4 possible positions for maximum convenience



8460N



AH8462N



AH8362AN

Flush power receptacles

Rating A	V/AC	NEMA	Description	Color	Catalog no.	
60	3Ø 250	15-60R	Flush mount power receptacle, side wire	BK	□ 8460N	•

cULus Listed to UL498, file no. E15058; CSA certified to C22.2, no.42

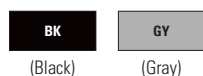
Industrial grade plugs

Rating A	V/AC	NEMA	Description	Color	Catalog no.	
60	3Ø 250	15-60P	Industrial grade auto grip straight body power plug	GY	□ AH8462N	•
			Industrial grade angled power plug	GY	□ AH8462AN	•

cULus Listed to UL498, file no. E15058; CSA certified to C22.2, no.42

Color information:

Color suffix: BK (Black), GY (Gray)

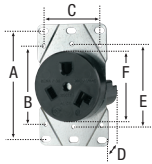


Dimensional information: A-90 **Specification information:** Please visit www.eaton.com/wiringdevices

Compliances, specifications and availability are subject to change without notice.

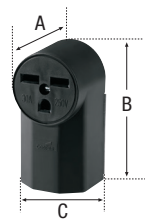
 Indicates USMCA compliant - Page Q-41

Flush receptacles



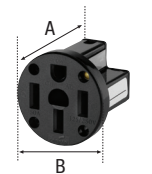
Family	A	B	C	D (Depth)	E	F (Face dia.)
30 & 1200 series	3.28" (83.3mm)	2.38" (60.5mm)	1.81" (46.0mm)	1.42" (36.1mm)	2.50" (63.5mm)	2.10" (53.5mm)
5000 & 7000 series	3.28" (83.3mm)	2.38" (60.5mm)	1.81" (46.0mm)	1.69" (42.9mm)	2.50" (63.5mm)	2.12" (53.8mm)
8000 series	3.28" (83.3mm)	2.38" (60.5mm)	1.81" (46.0mm)	1.69" (42.9mm)	—	2.38" (60.5mm)

Surface receptacles



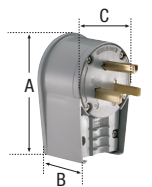
Family	A	B	C
100 & 1200 series	2.10" (53.3mm)	4.75" (120.7mm)	2.50" (63.5mm)

Panel mount receptacles



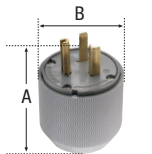
Family	A	B
58, 60	2.80" (71.1mm)	2.80" (71.1mm)
U1263	1.69" (42.9mm)	2.09" (53.1mm)

Angled plugs



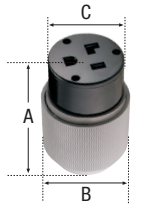
Family	A	B	C	Cord diameter
80 & 83	2.92" (74.2mm)	1.03" (26.2mm)	2.80" (71.1mm)	83: 0.64" (16.3mm) max. 80: 0.80" (20.3mm) max.
S41 & S42, S20 & S21, S19	3.37" (85.6mm)	1.38" (35.1mm)	2.87" (72.9mm)	S41 & S42: 1.10" (27.9mm) S20 & S21: 1.13" (28.7mm) S19: 1.00" (25.4mm)
4500AN, 5700AN, 7900AN, 8300AN, 8400AN, 9300AN, 9400AN, AH8400AN series	4.30" (109.2mm)	1.88" (47.8mm)	3.00" (76.2mm)	0.56-1.31" (14.2-33.3mm)

Plugs



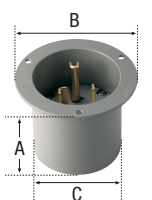
Family	A	B	Cord diameter
4500N, 5500N, 5700N, 8300N, 8400N, 9300N, 9400N, AH8400N series	3.34 -3.81" (84.8 -96.8mm) varies with diameter of cord	3.12" (79.2mm)	0.43 -1.31" (10.8 -33.3mm)

Connectors



Family	A	B	C	Cord diameter
6700N, 9300N, 9500N series	4.71-5.19" (119.6-131.8mm) varies with diameter of cord	3.12" (79.2mm)	2.59" (65.8mm)	0.43-1.31" (10.8 -33.3mm)

Flanged inlets



Family	A	B	C
4500NFI, 5700NFI, 9300NFI series	2.72" (69.1mm)	3.75" (95.3mm)	2.81" (71.4mm)

Compliances, specifications and availability are subject to change without notice.

Commercial grade power devices

Product description

2-pole, 3-wire grounding; 3-pole, 3-wire non-grounding; 3-pole, 4-wire grounding; 4-pole, 4-wire non-grounding
20A, 125/250VAC; 30A, 125V/AC, 250V/AC, 125/25V/AC; 50A 125V/AC, 250V/AC, 125/250V/AC; 60A 125/250V/AC
NEMA 5-30, 5-50, 6-30, 6-50, 10-20, 10-30, 10-50, 14-30, 14-50, 14-60, TT-30

Device type	Commercial power plugs, straight blade	Commercial power flush receptacles, straight blade	Commercial power surface receptacles, straight blade	Commercial power panel mount receptacles, straight blade
Wiring type	Back wire	Back wire	Back wire	Back wire
Testing & code compliance	<ul style="list-style-type: none"> • S41, S42, S80: Listed to UL498 file no. E15012 • S19, S20, S21: cULus Listed to UL 498 file no. E15012 • S41, S42: CSA certified to C22.2, no. 42-99 file no. 2081 (6221-02) • NOM certified 	<ul style="list-style-type: none"> • Listed to UL498, file no. E15058 • Complies with Fed Spec WC-596G • cUL Listed to CSA C22.2, no. 42-M1999 	<ul style="list-style-type: none"> • Listed to UL498, file no. E15058 • CSA certified to C22.2, no. 42, file no. 6914 (6233-81) • NOM certified 	<ul style="list-style-type: none"> • Listed to UL498, file no. E15058 • CSA certified to C22.2, no. 42, file no. 6914 (6233-81) • NOM certified
Environmental specifications	Flammability: Meets UL94 requirements, V0 rated Temperature rating: -20°C to 60°C (-4°F to 140°F)	Flammability: Meets UL94 requirements, V0 rated Temperature rating: -20°C to 75°C (-4°F to 167°F)	Flammability: Meets UL94 requirements, V0 rated Temperature rating: -20°C to 75°C (-4°F to 167°F)	Flammability: Meets UL94 requirements, V0 rated Temperature rating: -20°C to 75°C (-4°F to 167°F)
Electrical specifications	Dielectric voltage: Twice the device rating + 1000V per UL498 Current interrupting: Yes, at full-rated current Temperature rise: Max. 30°C (86°F) after 50 cycles of overload @ 150% of rated current (DC)	Dielectric voltage: Twice the device rating + 1000V per UL498 Current interrupting: Yes, at full-rated current Temperature rise: Max. 30°C (86°F) after 50 cycles of overload @ 150% of rated current (DC)	Dielectric voltage: Twice the device rating + 1000V per UL498 Current interrupting: Yes, at full-rated current Temperature rise: Max. 30°C (86°F) after 50 cycles of overload @ 150% of rated current (DC)	Dielectric voltage: Twice the device rating + 1000V per UL498 Current interrupting: Yes, at full-rated current Temperature rise: Max. 30°C (86°F) after 50 cycles of overload @ 150% of rated current (DC)
Mechanical specifications	Terminal accommodation: S19, S20, S21: #10 - #4 AWG S41, S42: #10 - #6 AWG S80: #10 - #8 AWG Voltage ratings: Permanently marked on device	Terminal accommodation: #10 - #4 AWG Voltage ratings: Permanently marked on device	Terminal accommodation: #10 - #4 AWG Voltage ratings: Permanently marked on device	Terminal accommodation: #10 - #4 AWG Voltage ratings: Permanently marked on device
Materials	Receptacle base: N/A Receptacle face: N/A Plug/connector outer shell: PVC Blades: 0.096" thick brass Line contacts: N/A Terminal clamps: Steel, zinc plated Terminal screws: 1/4-28 set screw, steel, zinc plated Ground contact: N/A Ground screw: 1/4-28 set screw, steel, zinc plated Assembly/mounting screws: #8-32 steel, zinc plated, except S80: #6-32 steel, nickel plated Cord clamp screws: #8-32 steel, zinc plated, except S80: #6-32 steel, nickel plated Cord clamp: Steel, zinc plated Receptacle mounting plate: N/A	Receptacle base: Urea Receptacle face: Urea Plug/connector outer shell: N/A Blades: N/A Line contacts: 0.040" thick 260 brass Terminal clamps: 0.072" thick steel with SCR Terminal screws: 5/16-24 steel lug screws, AL lug Ground contact: 0.032" thick brass Ground screw: 5/16-24 steel lug screws Assembly/mounting screws: #6-32 steel, zinc plated Cord clamp screws: N/A Cord clamp: N/A Receptacle mounting plate: 0.045" thick galvanized steel	Receptacle base: Urea Receptacle face: Polypropylene Plug/connector outer shell: N/A Blades: N/A Line contacts: 0.040" thick brass, solder plated Terminal clamps: 0.093" thick steel screw, copper plated Terminal screws: 1/4-20 set screw, copper plated Ground contact: 0.032" thick brass Ground screw: 1/4-20 steel, zinc plated, green Assembly/mounting screws: #6-32 steel, zinc plated Cord clamp screws: N/A Cord clamp: N/A Receptacle mounting plate: 0.045" thick galvanized steel	Receptacle base: Urea Receptacle face: Urea Plug/connector outer shell: N/A Blades: N/A Line contacts: 0.045" thick brass, tin plated Terminal clamps: 0.013" thick steel Terminal screws: 1/4-28 Ground contact: 0.032" thick brass Ground screw: 1/4-28 steel, zinc plated Assembly/mounting screws: #6-32 steel, zinc plated Cord clamp screws: N/A Cord clamp: N/A Receptacle mounting plate: 0.040" thick steel, galvanized

Compliances, specifications and availability are subject to change without notice.