

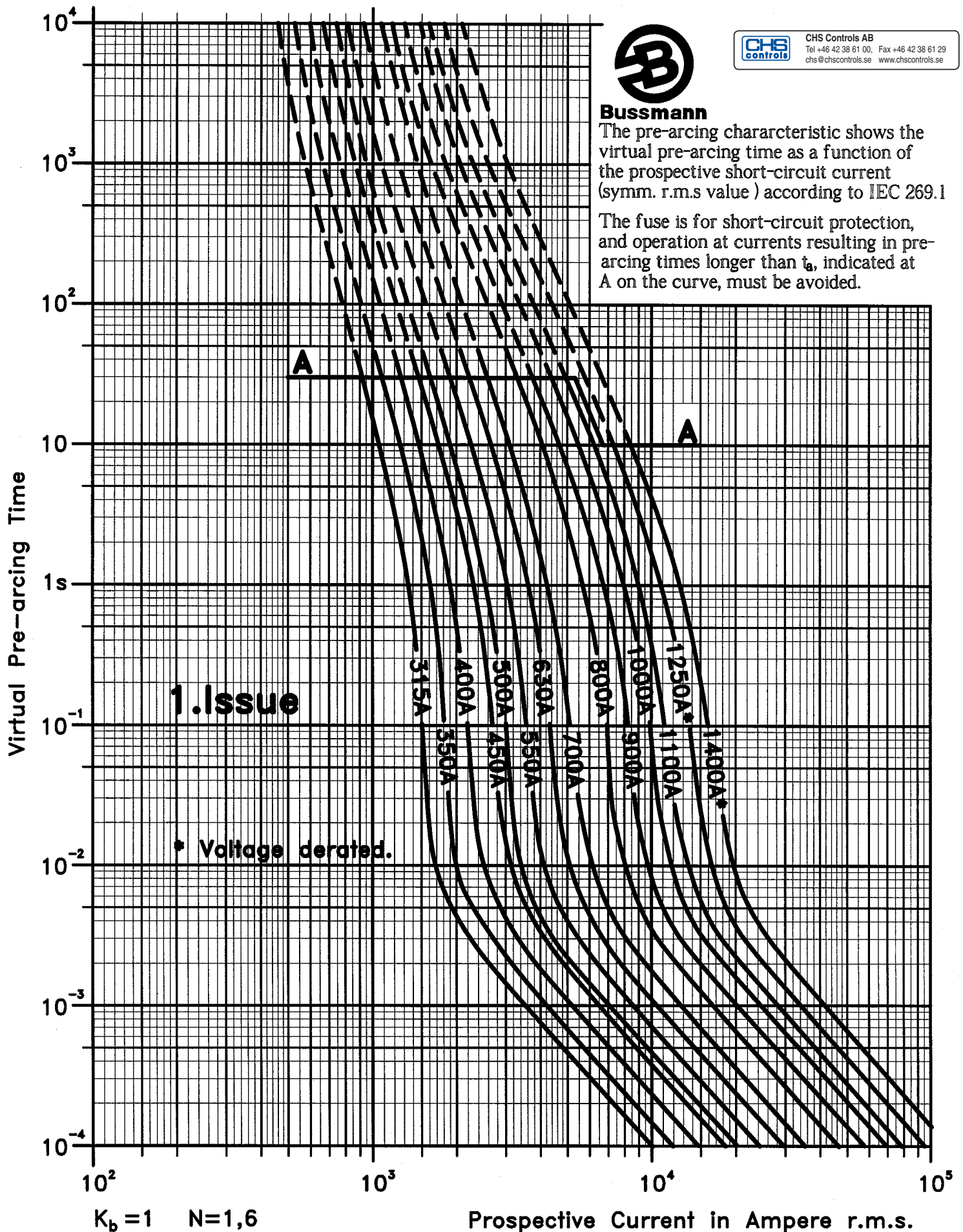


CHS Controls AB
Tel +46 42 38 61 00, Fax +46 42 38 61 29
chs@chscontrols.se www.chscontrols.se

Bussmann

The pre-arcing characteristic shows the virtual pre-arcing time as a function of the prospective short-circuit current (symm. r.m.s value) according to IEC 269.1

The fuse is for short-circuit protection, and operation at currents resulting in pre-arcing times longer than t_a , indicated at A on the curve, must be avoided.



BUSSMANN DENMARK

Literbuen 5, DK-2740 Skovlunde, Int tlf (+45) 44 85 09 20, Int fax (+45) 44 85 09 02

High Speed Fuses Size: 3 1250V AC

Type: TYPOWER ZILOX

STANDARD RATINGS

Scale:

Drwg.by: Arthur

Rev.: UBC 9844

Approved:

Date: 911030

170K6636

Rated current RMS-value A	Pre-arcing integral (from cold) A ² s	Max. operating I _t at 1000V~ A ² s	Max. operating I _t at 1250V~ A ² s	Losses at rated current W
315	9 500	58 000	77 500	85
350	13 500	81 500	110 000	90
400	19 500	120 000	160 000	95
450	31 000	185 000	245 000	100
500	39 000	235 000	310 000	105
550	55 000	325 000	435 000	110
630	83 500	495 000	665 000	115
700	115 000	705 000	940 000	120
800	205 000	995 000	1 300 000 ^o	125
900	305 000	1 500 000	1 900 000 ^o	130
1 000	450 000	2 150 000	2 750 000 ^o	135
1 100	575 000	2 800 000	3 600 000 ^o	160
^{a)} 1 250	810 000	3 950 000	—	170
^{a)} 1 400	1 250 000	6 000 000	—	175

For fuses with rated current ≤ 700 A use correction curve marked b).

For fuses with rated current ≥ 800 A use correction curve marked c).

E_g: RMS value of working voltage in V.

K: Correction factor for max. operating I_t

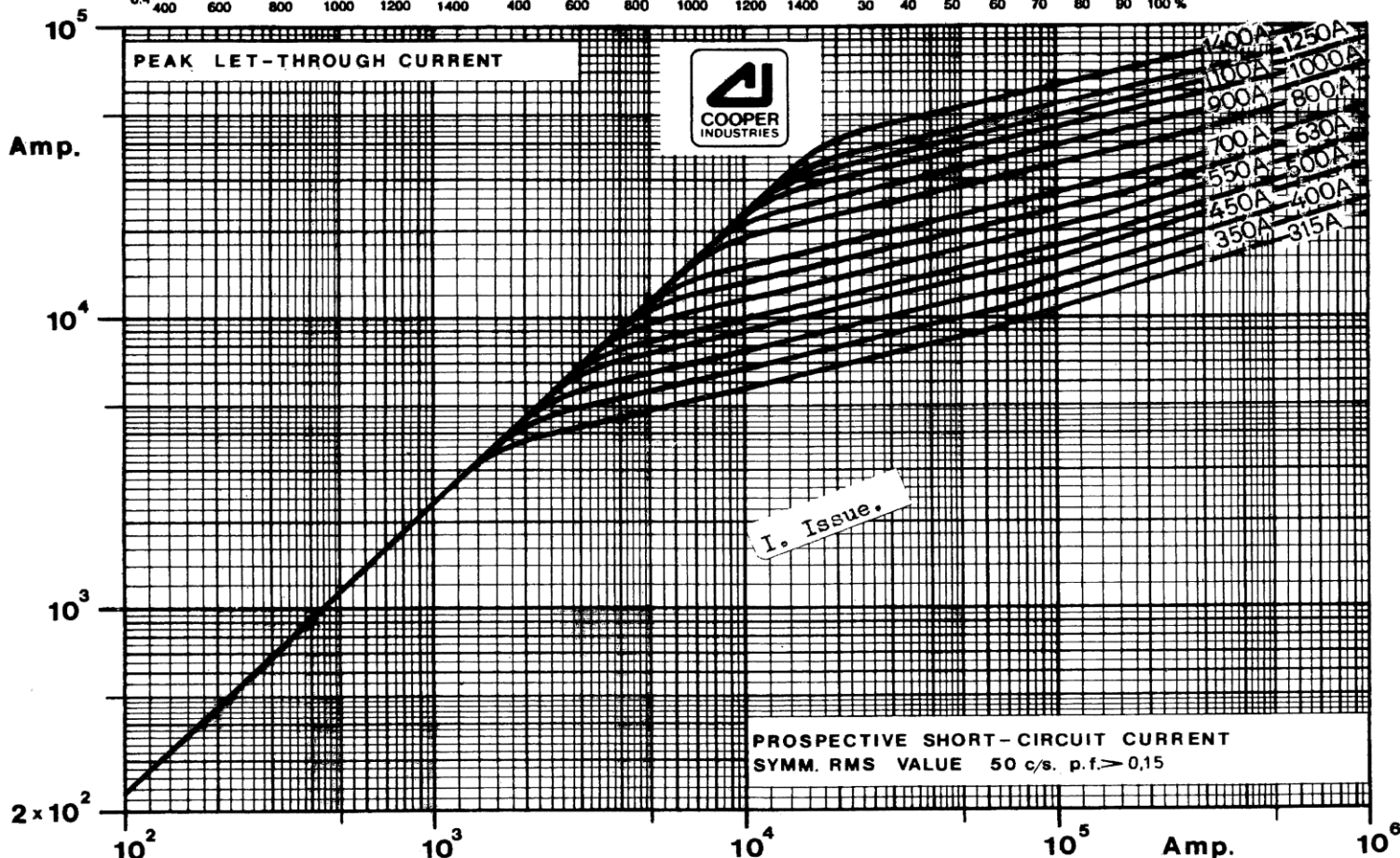
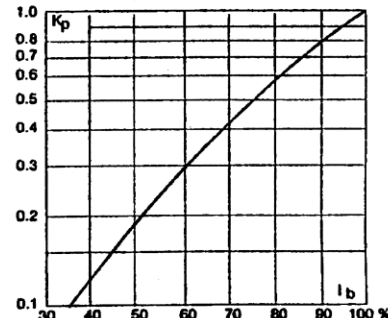
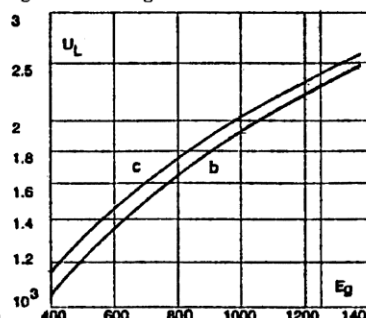
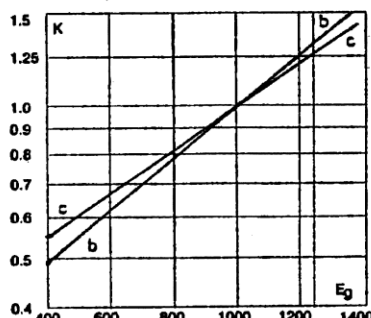
K_p: Correction factor for watt losses

I_b: RMS value of load current in % of rated current

U_L: Max. Arc Voltage in V

^{a)} Voltage derated

^o Voltage derating in certain versions.



BUSSMANN DENMARK

Literbuen 5, DK-2740 Skovlunde, Int tlf (+45) 42 91 99 00, int fax (+45) 42 91 11 51

High Speed Fuse Size 3 1250V AC

Type: TYPOWER ZILOX

STANDARD RATINGS

Scale:

Drwg. by: *Author*

Rev.: 9213 *M*

Approved: *[Signature]*

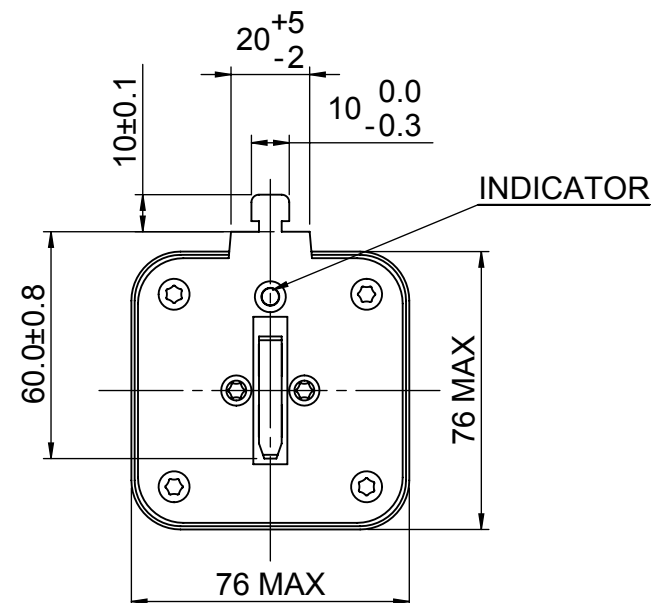
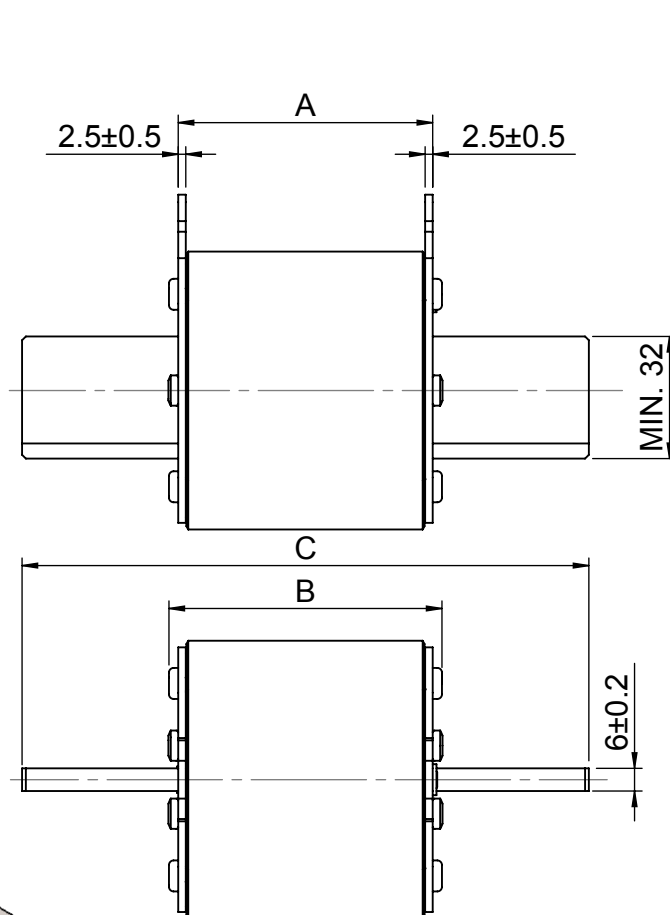
Date: 911030

170K6637

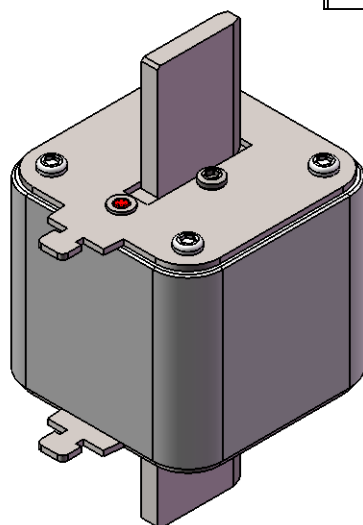



CHS Controls AB
Tel +46 42 38 61 00, Fax +46 42 38 61 29
chs@chscontrols.se www.chscontrols.se

REV	DESCRIPTION	BY	DATE	CHANGE NO.
D	DRAWING UPDATED WITH EATON TEMPLATE	KVS	04/01/2017	BUEI4519



Pos.	Type	A mm	B mm	C mm
1	3SHT	68±2.5	70±5	150±2.5
2	3SHT	45.4±1.5	50±1.5	150±2.5



MODEL VERSION: 01	UNLESS OTHERWISE SPECIFIED, ALL DIMENSIONS ARE IN MILLIMETERS.		TITLE HIGH SPEED FUSE TYPE 3SHT					 <i>Powering Business Worldwide</i>	
	TOLERANCES UNLESS OTHERWISE SPECIFIED: GENERAL ± 0.2mm ANGULAR ± 1°								
	UNCONTROLLED COPY		DRAWN BY: KVS	DATE: 27/05/09	SCALE: NTS	ANGLE: FIRST	SIZE: A4	EATON Burton-on-the-Wolds, Leics, LE12 5TH Tel +44 1509 882 600	
	THIS DRAWING IS CONFIDENTIAL AND THE COPYRIGHT OF EATON AND MUST NOT BE COPIED OR PASSED ON TO A THIRD PARTY WITHOUT WRITTEN CONSENT		MATERIAL: VARIOUS		FINISH: NONE		DWG NO: 170X0653		