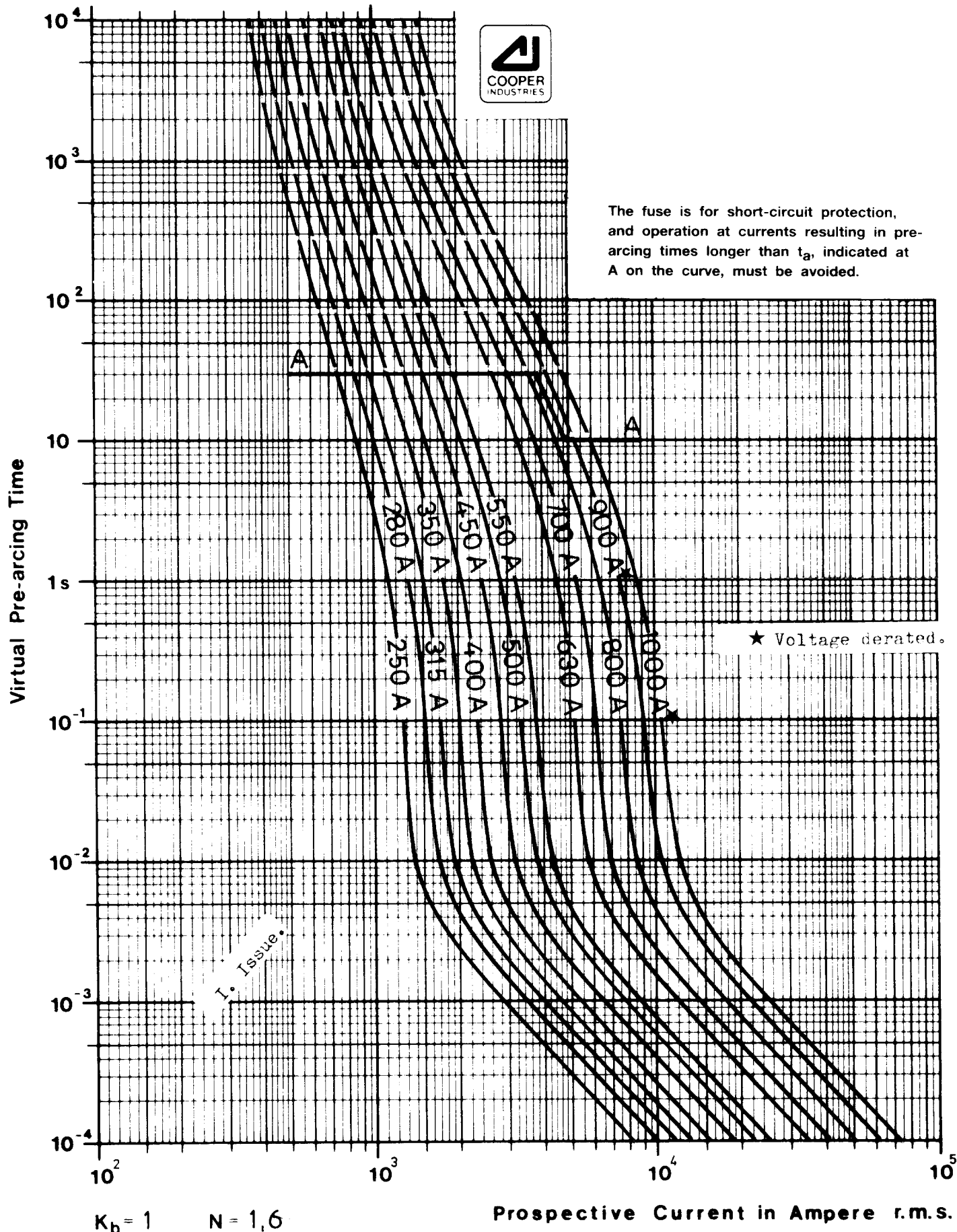




The fuse is for short-circuit protection, and operation at currents resulting in pre-arcing times longer than t_a , indicated at A on the curve, must be avoided.



BUSSMANN DENMARK

Literbuen 5, DK-2740 Skovlunde, Int tlf (+45) 42 91 99 00, int fax (+45) 42 91 11 51

High Speed Fuse Size 2 1250V AC

Type: TYPOWER ZILOX

STANDARD RATINGS

Scale:

Drwg. by: *Anders*

Rev.:

Approved: *[Signature]*

Date: 911030

170K6634

33.110 G



CHS Controls AB
Tel +46 42 38 61 00, Fax +46 42 38 61 29
chs@chscontrols.se www.chscontrols.se

Rated current RMS-value A	Pre-arcing integral (from cold) A ² s	Max. operating I ² t at 1000V~ A ² s	Max. operating I ² t at 1250V~ A ² s	Losses at rated current W
250	6 500	38 500	51 500	65
280	9 350	55 500	74 500	70
315	13 000	77 500	105 000	75
350	16 500	97 500	135 000	80
400	23 000	140 000	180 000	85
450	34 000	205 000	270 000	90
500	48 000	285 000	380 000	95
550	62 000	370 000	495 000	100
630	115 000	575 000	730 000 ^o	120
700	160 000	795 000	1 050 000 ^o	125
800	245 000	1 200 000	1 550 000 ^o	130
^a)900	360 000	1 750 000	—	135
^a)1 000	480 000	2 350 000	—	145

For fuses with rated current ≤ 550 A use correction curve marked b).

For fuses with rated current ≥ 630 A use correction curve marked c).

E_g: RMS value of working voltage in V.

K: Correction factor for max. operating I²t

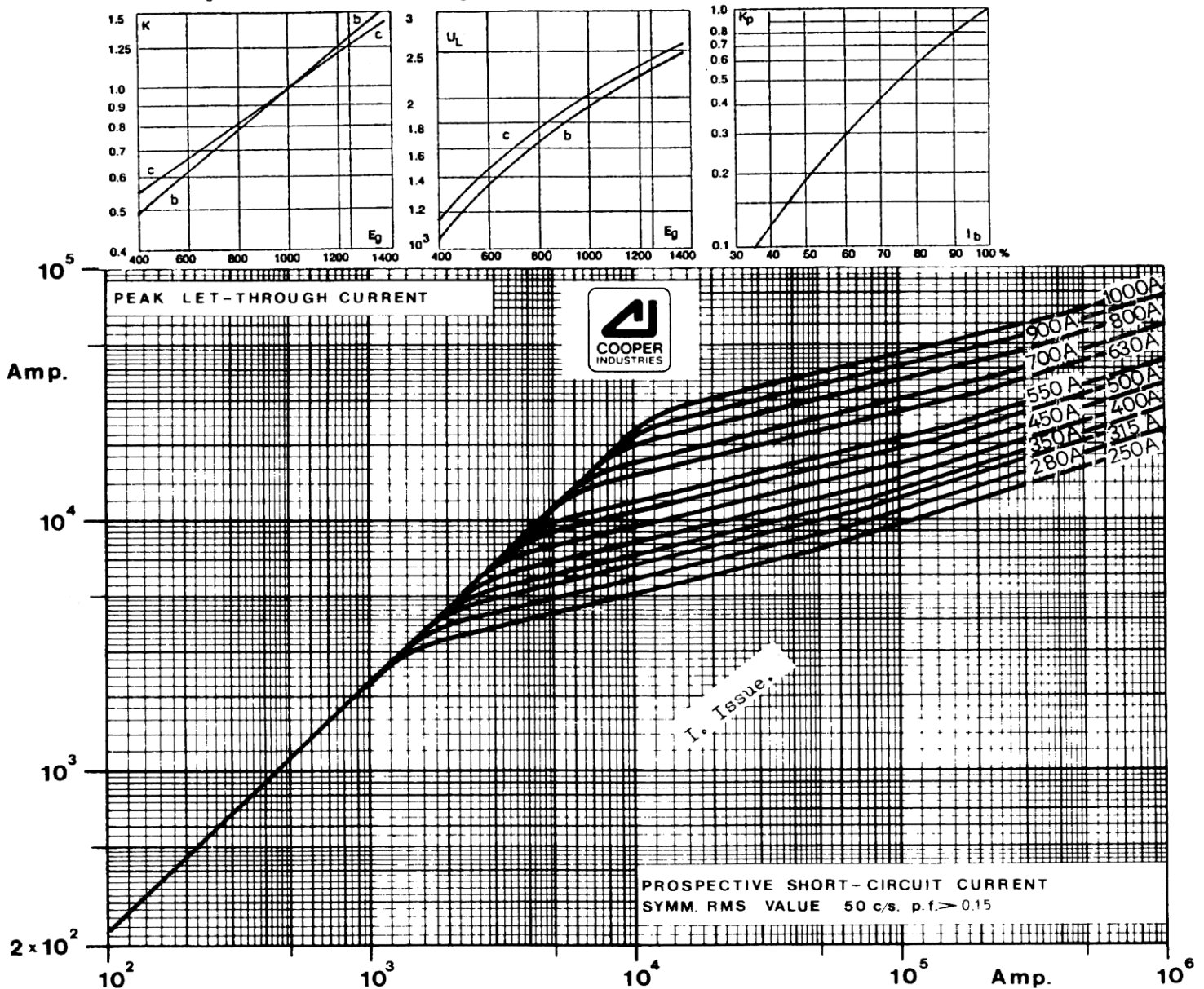
K_p: Correction factor for watt losses

I_b: RMS value of load current in % of rated current

U_L: Max. Arc Voltage in \hat{V}

^a) Voltage derated

^o) Voltage derating in certain versions.



BUSSMANN DENMARK

Literbuen 5, DK-2740 Skovlunde, Int tlf (+45) 42 91 99 00, int fax (+45) 42 91 11 51

High Speed Fuse Size 2 1250V AC

Type: TYPOWER ZILOX

STANDARD RATINGS

Scale:

Drwg. by: *Arthur*

Rev.: 9213 *U.*

Approved: *[Signature]*

Date: 911030

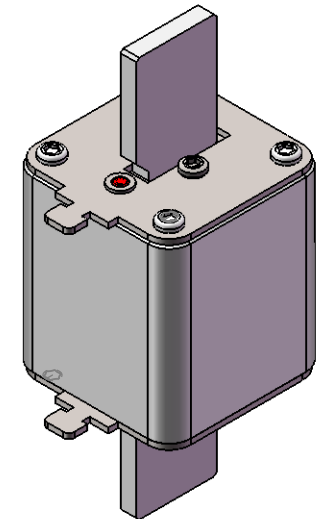
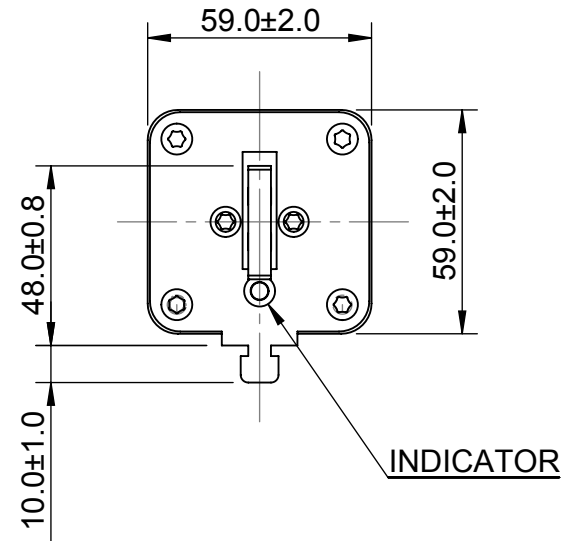
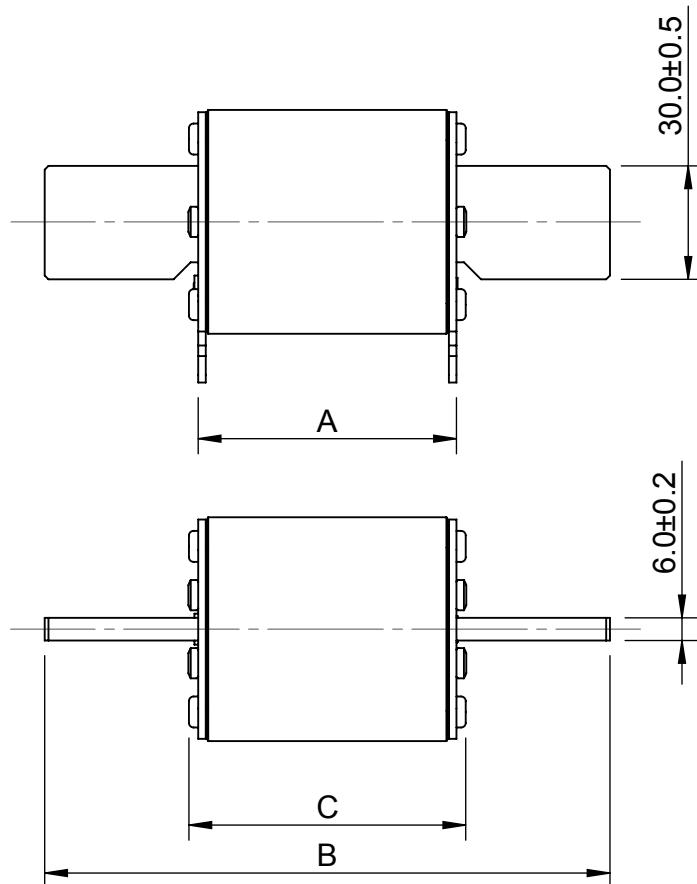
170K6635

33.0118D




CHS Controls AB
Tel +46 42 38 61 00, Fax +46 42 38 61 29
chs@chscontrols.se www.chscontrols.se

REV	DESCRIPTION	BY	DATE	CHANGE NO.
C	DRAWING UPDATED WITH EATON TEMPLATE	EDK	03/01/2017	BUEI4519



Pos.	Type	A	B	C
1	2SHT	69 ± 2.5	150 ± 2.5	74 ± 2.5
2	2SHT	45 ± 1.5	150 ± 2.5	50 ± 1.5

MODEL VERSION: 00	UNLESS OTHERWISE SPECIFIED, ALL DIMENSIONS ARE IN MILLIMETERS.	TITLE HIGH SPEED FUSES SIZE 2 TOP INDICATOR					 <i>Powering Business Worldwide</i>		
	TOLERANCES UNLESS OTHERWISE SPECIFIED: GENERAL ± 0.2mm ANGULAR ± 1°								
	UNCONTROLLED COPY	DRAWN BY: KVS	DATE: 05/05/09	SCALE: NTS	ANGLE: FIRST	SIZE: A4			
	MODEL SOURCE FILE: U0416	THIS DRAWING IS CONFIDENTIAL AND THE COPYRIGHT OF EATON AND MUST NOT BE COPIED OR PASSED ON TO A THIRD PARTY WITHOUT WRITTEN CONSENT	MATERIAL: VARIOUS		FINISH: NONE		EATON Burton-on-the-Wolds, Leics, LE12 5TH Tel +44 1509 882 600		
DWG NO: 170X0554									