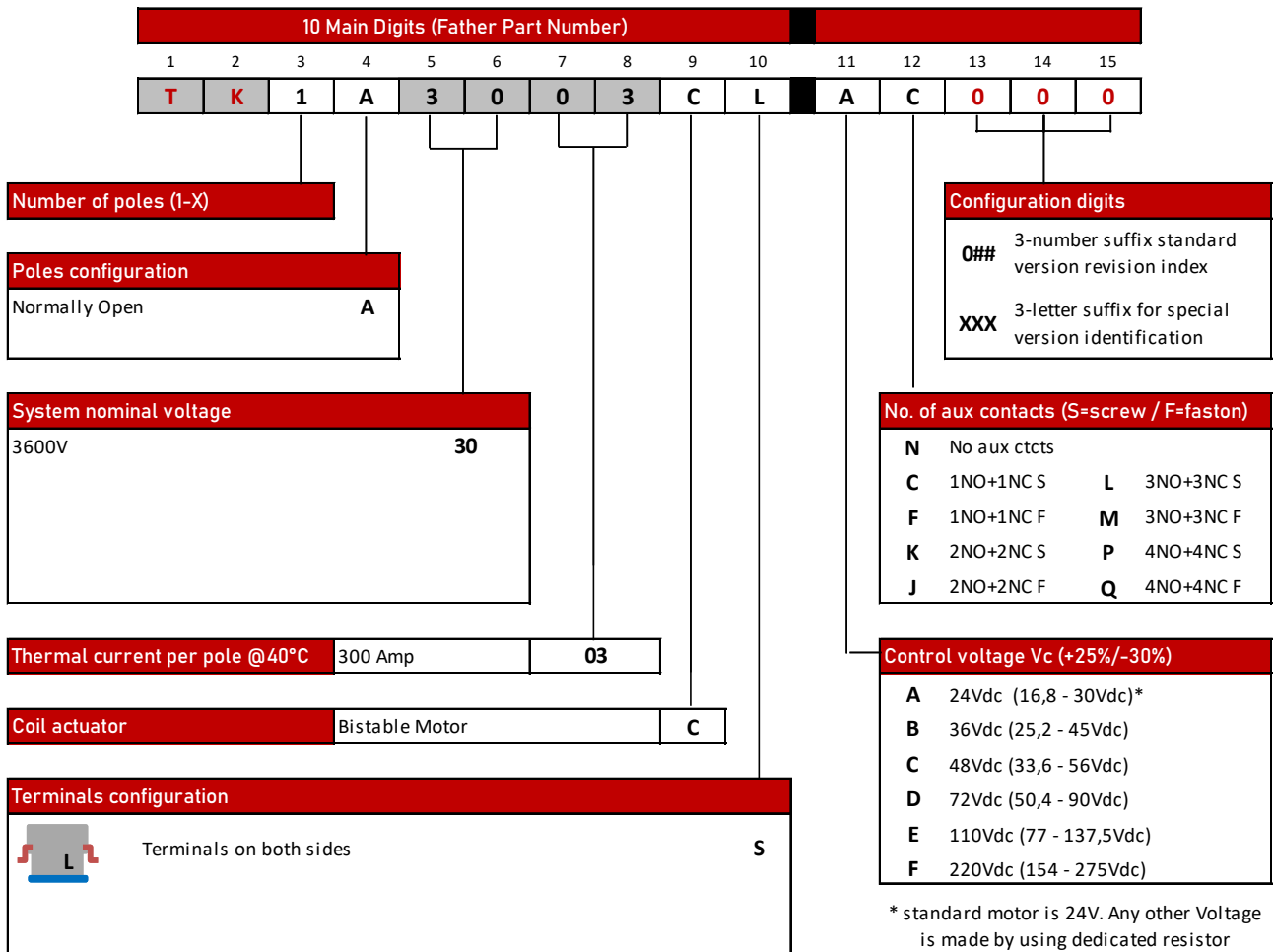


TK-Disconnectors follow a „talking“ Part Number System to differentiate between its versions:



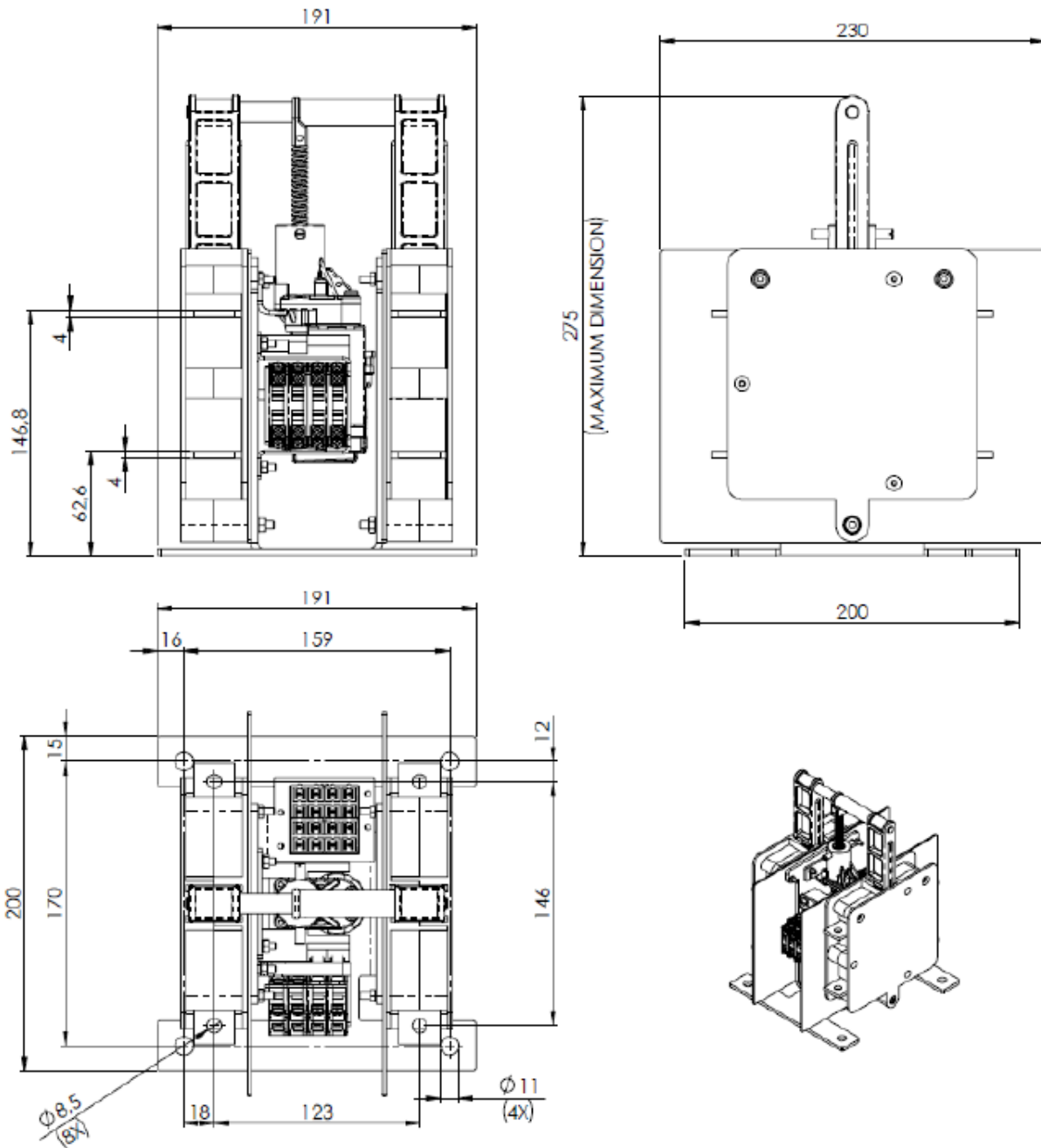
TK Technical Data

Electrical Data			
Rated Operational Voltage	Ue	3600	Vdc/ac
Rated insulation voltage	Ui	4800	Vdc
Rated impulse withstand voltage	Uimp	25	kV
Conventional free air thermal current at 40°C	Ith 40	350	A
Conventional free air thermal current at 75°C	Ith 75	300	A
Rated operational current	Ie		A
Rated short time withstand current	Icw/t	10/100	kA/ms
Peak short time withstand current	Icw	10	kA

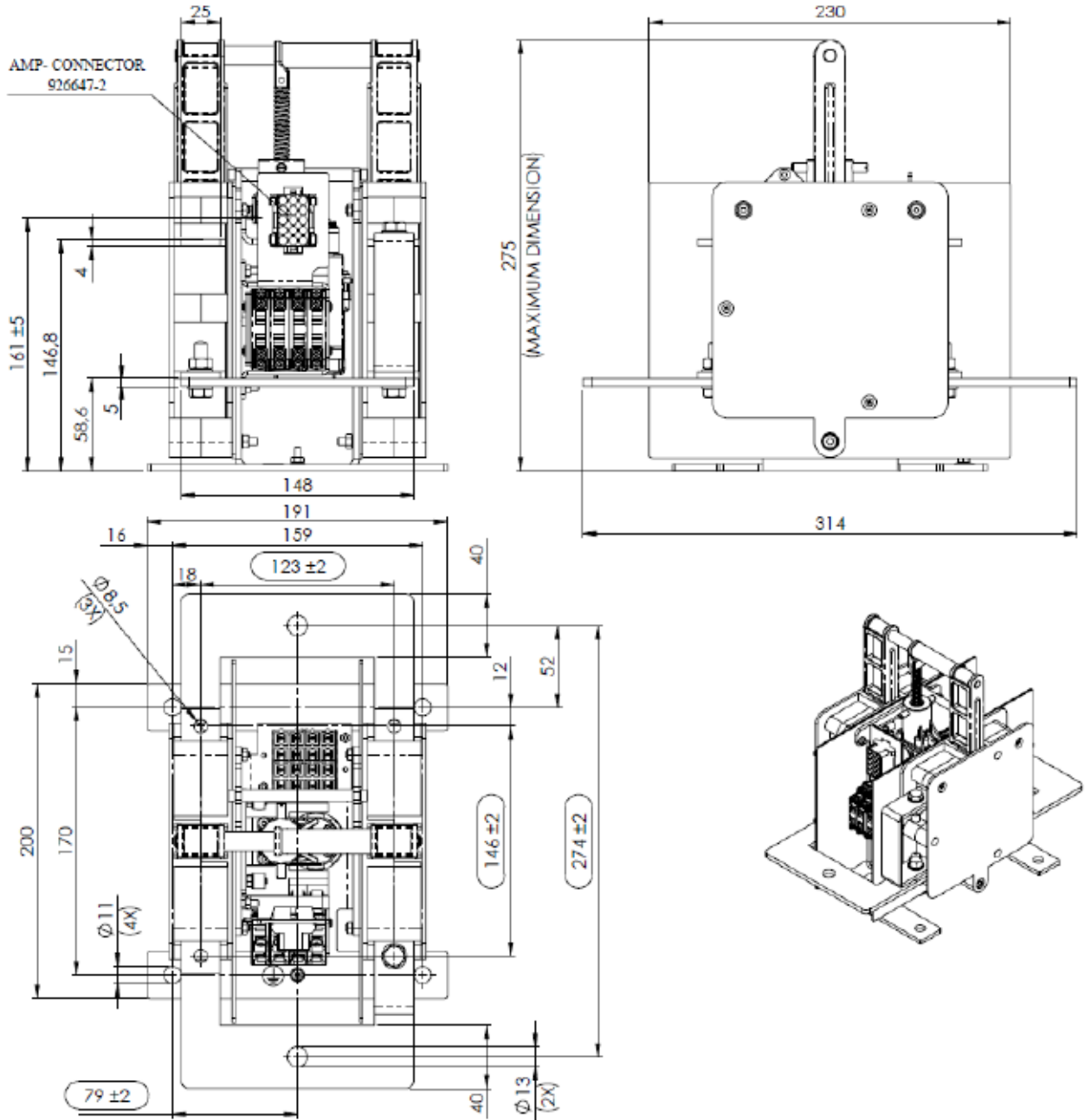
Control Motor Data						
Motor voltage [Vc]:	24Vdc	-30% +25%	Closing Power at Vc:	30W	Opening Power at Vc:	30W
Motor Part Number:	C065001		Holding Power:	0W		

Mechanical and Environmental Data		
Pollution degree / overvoltage category	EN 50124	PD3/OV3
Component category	EN 50124	A4/C3
Shock and vibration	IEC 61373	Cat 1 / class B
Mechanical endurance	cycles	250.000
Closing/opening time at Vc nom	sec	5/5
Weight	kg	TBD
Max altitude without derating	m asl	2000
Operational temperature	IEC 50125-1	-40°C to +75°C
Stocking temperature		-40°C to +75°C

Example 2 : TK 2NO+ 2NC

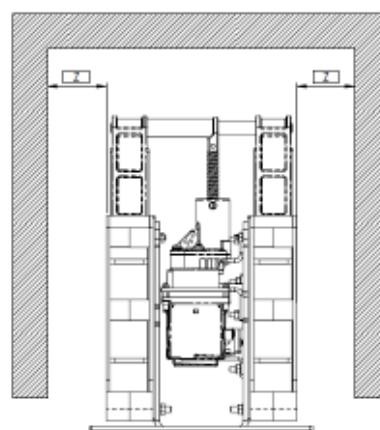
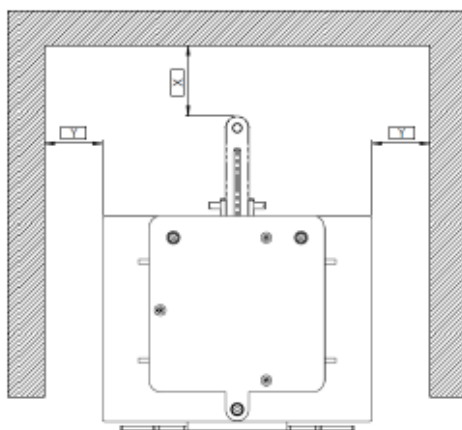


Example 3 : TK 2NO + 2NC with customized connectios



TK Installation insulating distances

Insulation Distances			
in mm	x	y	z
from metallic parts	50	80	30
from insulated parts	40	50	30



All information contained in the present document is subject to change without notice

TELAARC

Via E. Fermi 50, 20090 Trezzano sul Naviglio (Milano) – Italy
Phone/Fax +39.02.4969.9540 – email: info@telarc.it
www.telarc.it



CHS Controls AB
Tel +46 42 38 61 00, Fax +46 42 38 61 29
chs@chscontrols.se www.chscontrols.se