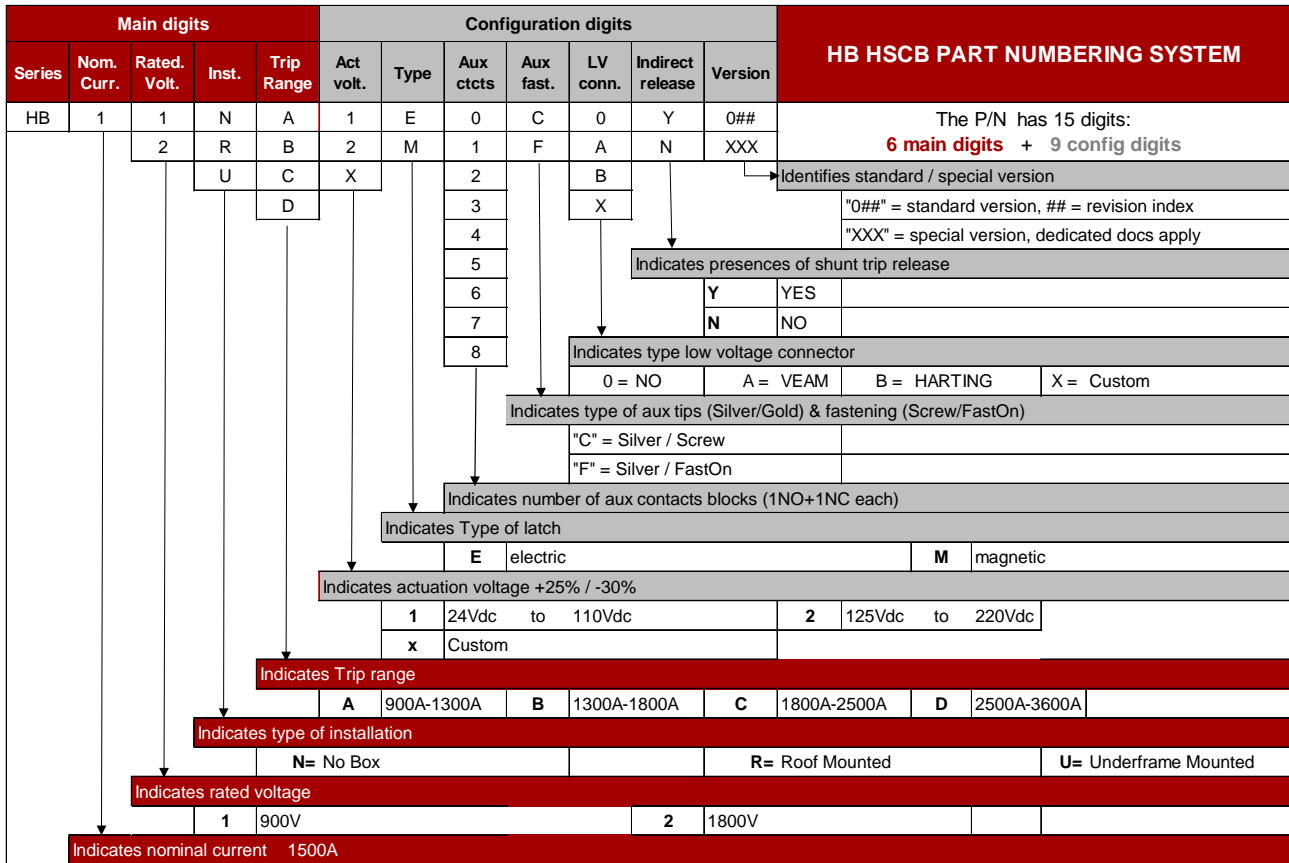


HB Models

HB-HSCB follow a „talking“ Part Number System to differentiate between its versions (*):



*aux contact in gold can be ordered as NON standard, with following codes : G=screws and H=Fast ON

The main digits identify:

1. Nominal current,
2. nominal voltage
3. installation type
4. Trip range

HB P/N & Docs

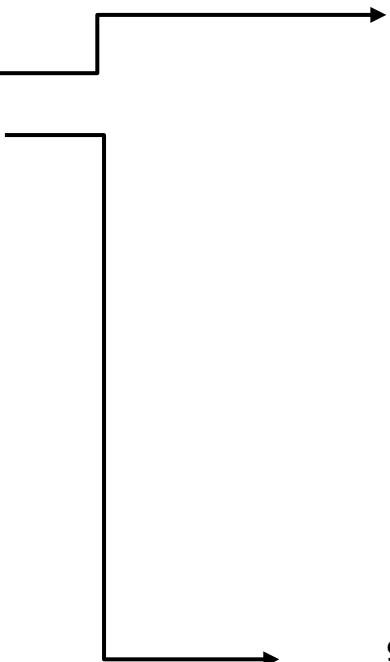
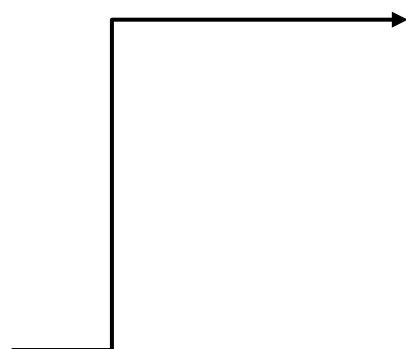
The configuration digit are used to define

1. Aux voltage
2. Accessories
3. Standard / special versions (e.g. dedicated to specific project)

Product documentation is released and updated online at www.telarc.it and includes:

1. A Product Chart PC for every applicable combination of main digits (standard versions), including all technical details, drawings, configuration information and spares part numbers.
2. A Validation Report VR, including all details of type tests carried out on HB range
3. A Product Manual PM, with detailed installation and maintenance instructions

(*) Please not that the Magnetic latch version and the indirect release will be available in 2020



R



U



**900V
1800V
Arc chutes**



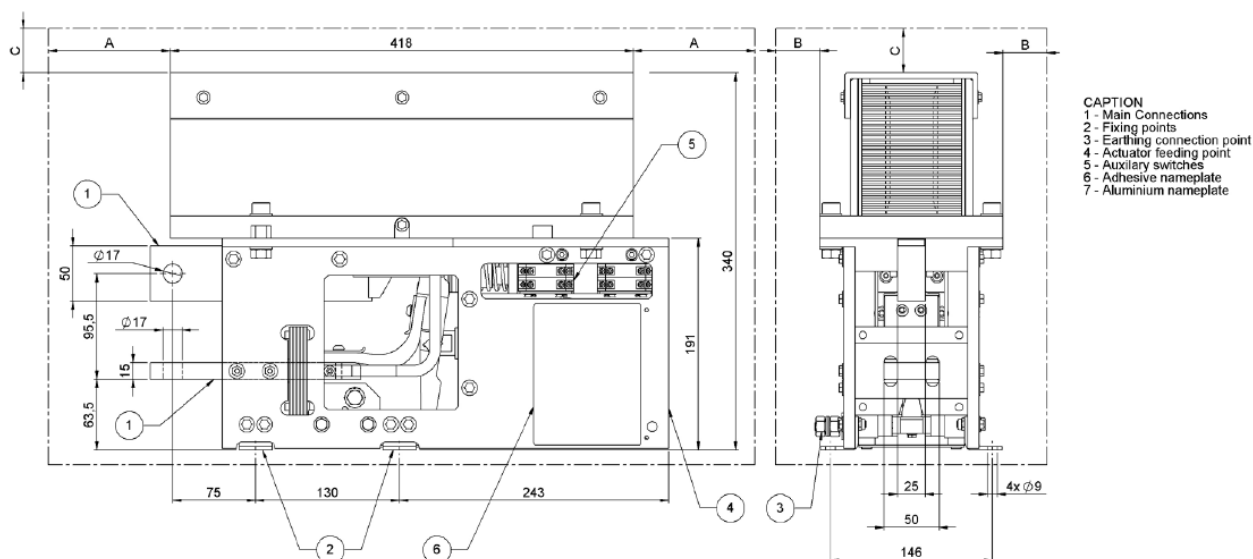
HB Data Sheet

HB technical data are listed according to series-parallel combinations of voltage and current versions

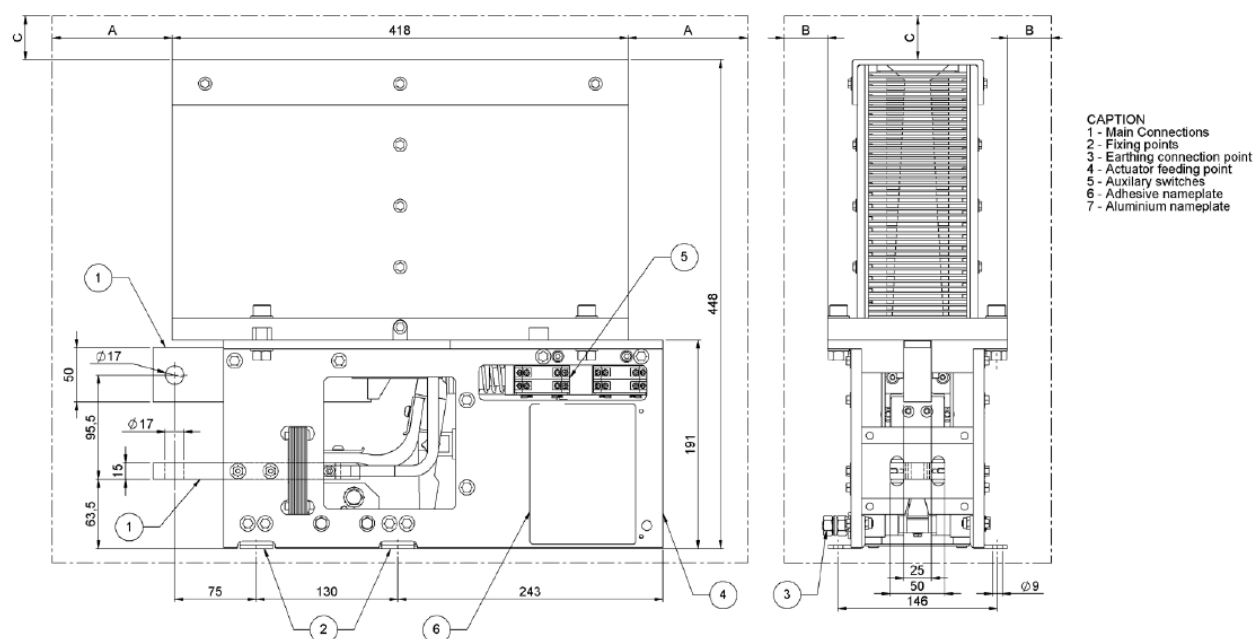
HB TECHNICAL DATA CHART		pole size	HB-1-1-N		HB-1-2-N	
Main electrical characteristics	Rated Operational Voltage		Ue	900	1800	V
	Rated insulation voltage		Ui	2300		V
	Rated impulse withstand voltage		Uimp	18	18	kV
	Free air thermal current @40°C		Ith	1500	1500	A
	Rated operational current		Ie	1500	1500	A
	Rated short-time withstand current		Icw/ 20ms	NA		kA
	Maximum breaking capacity DC T=15ms		Ibc	30	17	kA
	Maximum breaking capacity DC T2,T3,T4		Iba	30	30	kA
	Maximum making capacity DC T=15ms		Imc	3000		A
	Electrical endurance @Ue / Ie			1.000		cycles
	Critical current reversing polarization			<1		A
Other mechanical and control characteristics	Overvoltage category EN50124-1		PD3/OV3			
	Component category/ Operational frequency		A2/C3			
	Shock and vibration		EN 61373 cat.1B			
	Mechanical endurance		500.000			cycles
	Closing Power consumption		1000	1000		W
	Holding Power consumption (w/out economizer on NO		10	10		W
	Mechanical operation time [open -close]		50-70			msec
	Weight		28	38		kg
	Operational Temperature (IEC50125-1)		-40°C +75°C			°C
	Storage Temperature		-50°C + 85°C			°C
Operational altitude		<2000			m	
Routine test	Operation tolerance @20°C ambient		70%-125% Uc			
	Assembly verification		100%			

Overall dimension drawing:

HB-1-10



HB-1-20



Installation insulating distances:

mm	Nominal voltage					
	To metal (grounded) parts			To insulated parts		
	900V	1800V	3600V	900V	1800V	3600V
X	300	300	NA	90	90	NA
Y	100	100	NA	50	50	NA
Z	150	150	NA	30	30	NA

TELAARC

Via E. Fermi 50, 20090 Trezzano sul Naviglio (Milano) Italy
Phone/Fax +39.02.4969.9540 email: info@telarc.it
www.telarc.it



CHS Controls AB
Tel +46 42 38 61 00, Fax +46 42 38 61 29
chs@chscontrols.se www.chscontrols.se